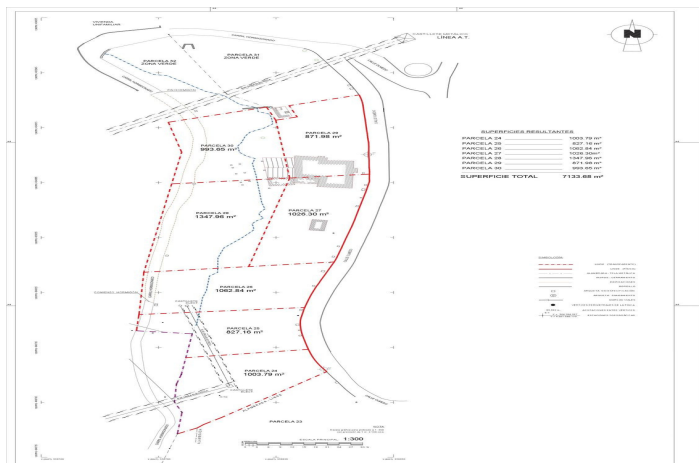


1,300,000 €

A panoramic view of a coastal town, likely in the Canary Islands, featuring a large body of water (the ocean) and a cloudy sky. The town is built on a hillside, with buildings and greenery visible in the foreground. The ocean is a deep blue, and a small ship is visible on the horizon. The sky is filled with white and grey clouds.





Costa del Sol, Benalmádena

Opportunity for Developers, a plot of 7.200 m² for 18 single-family homes, with a buildable ceiling of 2.500m²; being 7 independent plots and exclusive mode in Benalmádena, idyllic setting of the Costa del Sol, south facing, surrounded by the magnificent setting of the village of Benalmádena, with spectacular sea views. They are sold as a whole of the 18 not separately. It offers architectural study with detailed cost study that guarantees the investment and cost reduction through industrialized housing.



Features:

Orientation

South

Views

Sea

Mountain

Setting

Beachside

Close To Golf

Close To Sea

Close To Town

Town

Close To Forest

Marina

Close To Marina

Category

Investment

Bargain

Distressed

Luxury

Resale