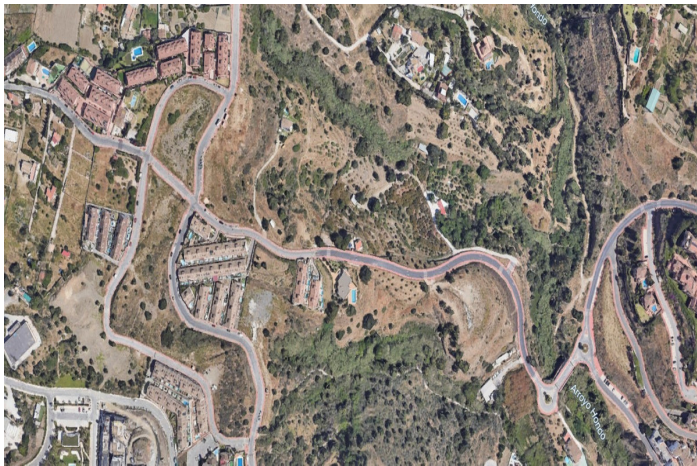




Land for sale in Benalmádena, Benalmádena

516,000 €

Reference: R5124310 Plot Size: 3,271m<sup>2</sup>





## Costa del Sol, Benalmádena

**RUSTIC TODAY BUT NOT FOR LONG** Rustic Land 3,271 m<sup>2</sup> in Benalmádena – Buy Today the Option on Tomorrow's Capital Gain! It's not "another little field." It's your profitable entry ticket into a municipality where quality land is scarce and each cycle pushes prices a bit higher. Today: 3,271 m<sup>2</sup> of rustic land in the "La Viñuela" area (Benalmádena). Clean, manageable, perfect for tactical land banking. While others fight over very expensive urban plots, you secure a "quiet" parcel and start making it attractive, productive, and legally impeccable. Tomorrow: When new transformation actions or planning adjustments activate, the party that arrives with a dossier (orderly current use, light improvements, preliminary reports) negotiates from a stronger position. You'll already have track record, photos, cared-for soil, and a sustainability narrative. That commands a premium. **WHY IT INTERESTS INVESTORS:** Moderate ticket vs. urban plots = diversified risk. Appreciation potential in a strong-demand municipality. Scarcity of well-located land = opportunity. Clear strategy: immediate legal use plus technical preparation for future urban development action. Ideal asset to preserve value while the cycle matures. **IMMEDIATE LEGAL USE IDEAS (while you wait):** Boutique organic garden, micro-vineyard or premium olive grove, outdoor wellness space, showcase aromatic garden, documented strategic reserve. **EXPRESS PLAN:** Planning / zoning and easement verification. Clearing, perimeter fencing, light landscaping enhancement. Implement permitted agrarian or recreational use and create photo record. Preliminary technical report on feasibility of future transformation. **WHY BUY IT:** Scarcity, momentum, optionality, legal certainty. **ACT NOW:** Want to be in before the price spikes? Message me now. **LEGAL NOTE:** Transaction subject to Andalusian rustic land regulations. Any future construction or transformation requires the corresponding procedures and approvals. Contact today. Tomorrow you're already competing. LBB