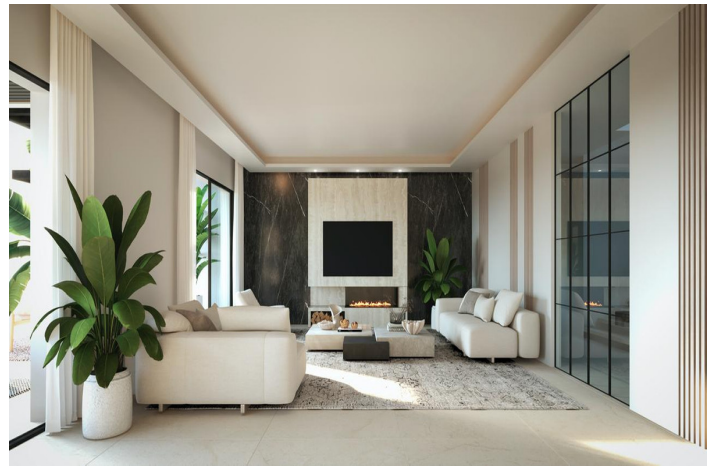




## Detached Villa for sale in Benalmádena, Benalmádena

2,450,000 €

Reference: R5071420   Bedrooms: 6   Bathrooms: 6   Plot Size: 1,441m<sup>2</sup>   Build Size: 725m<sup>2</sup>   Terrace: 116m<sup>2</sup>





## Costa del Sol, Benalmádena

A unique opportunity to acquire a 1,441 m2 plot located in the privileged area. This plot comes with a construction project and approved building license. **LAYOUT AND DESIGN** The villa is connected by a private elevator from the basement to the rooftop solarium. Every space has been thoughtfully designed to provide spaciousness, functionality, and natural light. A villa on a 1,441 m2 plot, distributed as follows: Garden Level: 314 m2 Ground Floor: 168 m2 First Floor: 158 m2 Solarium: 116 m2 **FEATURES AND FINISHES** Interior elevator connecting all levels Aerothermal climate control system, underfloor heating, and individually zoned air conditioning State-of-the-art thermal and acoustic insulation Fully customizable finishes: materials, carpentry, flooring, and more. Fully furnished and equipped kitchen Optional pre-installation of smart home automation and security systems **LOCATION AND AMENITIES** The property is in a residential area offering stunning sea views, peace and quiet, and close proximity to essential services: Just 6 minutes from the beach 15 minutes from Málaga International Airport Close to shopping areas, schools, medical centers, and sports facilities Near golf courses, Puerto Marina, supermarkets, and fine dining restaurants **PERFECT FOR LIVING OR INVESTMENT** This villa is ideal for building your dream home or as a high-yield investment, thanks to its strategic location, modern design, and customization potential. This is the perfect opportunity to live in a villa tailored to your lifestyle!



## Features:

### Features

Covered Terrace  
Lift  
Near Transport  
Private Terrace  
Ensuite Bathroom  
Solarium  
Jacuzzi  
Barbeque  
Domotics  
Basement

### Views

Sea  
Mountain  
Panoramic  
Garden  
Pool  
Courtyard

### Pool

Private

### Garden

Private  
Landscaped

### Category

Investment  
Off Plan  
With Planning Permission  
New Development

### Orientation

South East

### Setting

Close To Golf  
Close To Sea  
Close To Shops  
Close To Schools

### Furniture

Fully Furnished

### Security

Safe

### Climate Control

Cold A/C  
Hot A/C  
U/F Heating

### Condition

New Construction

### Kitchen

Fully Fitted

### Parking

More Than One