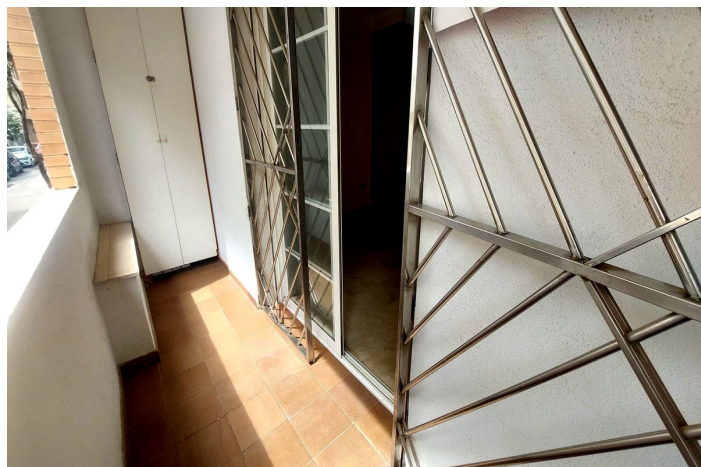




## Apartamento Planta Baja en venta en Fuengirola, Fuengirola

229.000 €

Referencia: R5075215   Dormitorios: 1   Baños: 1   Construido: 50m<sup>2</sup>   Terraza: 3m<sup>2</sup>





## Costa del Sol, Fuengirola

Unbeatable Location – Just 50m from the Beach in Fuengirola Location, location, location! This fantastic ground-floor apartment is set on the second line from the beach, only 50 metres from the sea, making it the perfect holiday home or permanent residence. The property offers a well-distributed layout with one bedroom fitted with wardrobes, a bathroom with washing machine, an open-plan fully fitted kitchen, and a bright lounge-dining area that opens onto a small private terrace. Its unbeatable central position means you'll have everything at your doorstep: the beach, port, shops, restaurants, and public transport. Key Features: Ground-floor apartment in gated complex 1 Bedroom | 1 Bathroom | Built: 50 m<sup>2</sup> | Terrace: 3 m<sup>2</sup> South-facing with street views Lift access and adapted for reduced mobility Fitted wardrobes, double glazing, and private terrace Secure complex with entry phone Offered unfurnished, with fully fitted kitchen This property is ideal as a lock-up-and-go holiday apartment, investment, or year-round home. With keys in hand, viewings are highly recommended! Ground Floor Apartment, Fuengirola, Costa del Sol. 1 Bedroom, 1 Bathroom, Built 50 m<sup>2</sup>, Terrace 3 m<sup>2</sup>. Setting : Town, Close To Port, Close To Shops, Close To Sea. Orientation : South. Condition : Good. Views : Street. Features : Lift, Fitted Wardrobes, Near Transport, Private Terrace, Access for people with reduced mobility, Double Glazing. Furniture : Not Furnished. Kitchen : Fully Fitted. Security : Gated Complex, Entry Phone, 24 Hour Security. Utilities : Electricity. Category : Bargain, Holiday Homes, Investment, Resale.





## Características:

### Características

Ascensor  
Cerca de Transporte  
Terraza Privada  
Doble acristalamiento  
Armarios Empotrados  
Access for people with reduced mobility

### Posición

Cerca de Puerto  
Cerca del Mar  
Cerca de Tiendas  
Ciudad

### Cocina

Cocina Equipada

### Categoría

Casas de vacaciones  
Inversion  
Ganga  
Reventa

### Orientación

Orientación Sureste

### Estado

Buen estado de conservación

### Seguridad

Recinto Cerrado  
Seguridad de 24 horas  
Portero Automático  
Calificación energética  
E

### Vistas

Vistas a Calle

### Muebles

Sin Amueblar

### Servicios Públicos

Electricidad

### CO2 Emission Rating

E