



HM INVESTMENTS



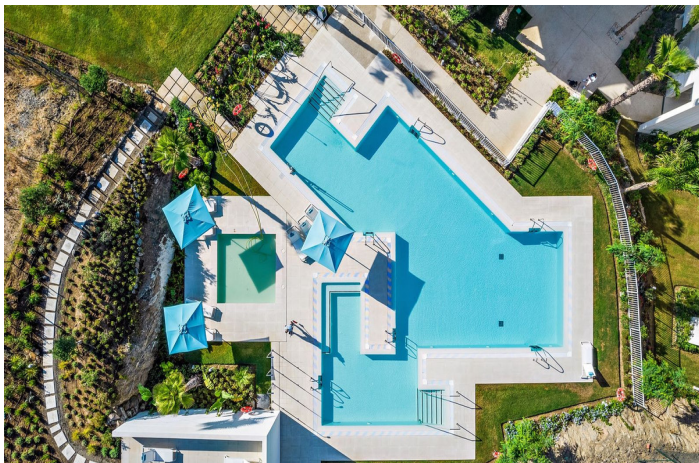
info@hm-invest.com

+34 660 092 090

## Apartamento Planta Media en venta en Marbella, Marbella

1.100.000 €

Referencia: R4862248    Dormitorios: 3    Baños: 2    Construido: 135m<sup>2</sup>    Terraza: 40m<sup>2</sup>





## Costa del Sol, Marbella

PALO ALTO, one of the finest projects offering a superior lifestyle with world-class amenities. Las Jacarandas Impressive contemporary flat, with sensational sea and mountain views. Las Jacarandas has two private outdoor pools with children's play areas and gardens. Residents also have full access to all the amenities of Palo Alto including, concierge services, a world-class health club, horse riding, spa and beauty facilities, paddle tennis courts, gym, tennis courts, a social club, a kids club, and endless space to enjoy the natural beauty of Sierra de las Nieves. The flat itself features high quality designer furniture (optional), wooden floors in the bedrooms combined with marble floors in the living area. The large open plan living and dining area with large glass windows to enjoy the views, leads out onto the spacious terrace. The flat has a spacious, bright open plan living/dining room with a beautiful open plan kitchen including top-end appliances, with American fridge integrated microwave and oven, with a separate room off the kitchen with washing machine and tumble dryer leading to the terrace, 3 bedrooms with fitted wardrobes and 2 bathrooms. There is also 24/24 security. The property also has 1 underground parking space. For the best of both worlds, it is only a short drive to La Cañada, a well-known shopping centre behind Marbella with all the shops you can imagine and the centre of Marbella with its amenities, shops, restaurants and bars and the beach.





## Características:

### Características

Terraza Cubierta  
Ascensor  
Cerca de Transporte  
Terraza Privada  
Trastero - Almacén  
Baño En-Suite  
24 Horas Recepción  
Armarios Empotrados  
WiFi  
Gimnasio  
Sauna  
Lavadero  
Suelo de Madera  
Jacuzzi  
Domotica  
Fibra óptica  
Access for people with reduced mobility

### Vistas

Vistas al Mar  
Vistas a Montaña

### Piscina

Piscina Comunitaria  
Con Calefacción  
Piscina Cubierta  
Children`s Pool

### Jardin

Jardín Comunitario

### Categoría

Lujo  
Reventa  
Contemporáneo

### Orientación

Orientación Sureste

### Posición

Urbanización

### Muebles

Opcionales

### Seguridad

Recinto Cerrado  
Seguridad de 24 horas  
Alarma  
Portero Automático

### Climatización

Aire Acondicionado  
A/A Frio  
A/A Caliente  
Baño

### Estado

Excelente estado de conservación

### Cocina

Cocina Equipada

### Aparcamiento

Parking Subterráneo