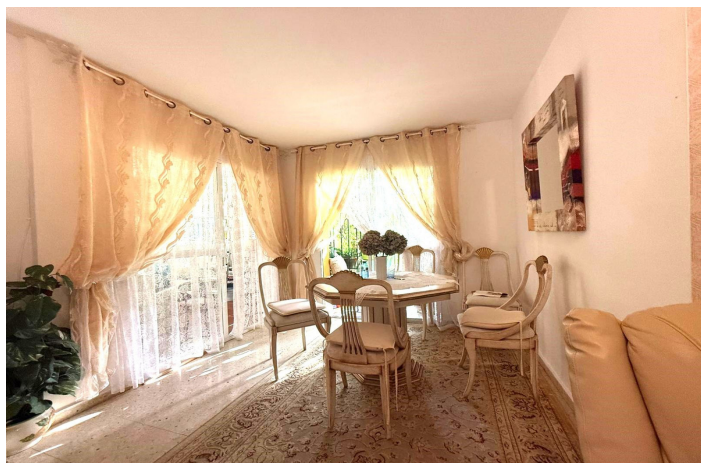




Apartamento Planta Baja en venta en Atalaya, Estepona

339.000 €

Referencia: R5074018 Dormitorios: 3 Baños: 2 Construido: 117m² Terraza: 15m²





Costa del Sol, Atalaya

Magnificent ground floor apartment in the exclusive gated community of Las Acacias, Estepona. Are you looking for a home in a dream residential environment, surrounded by tranquility and beauty? This magnificent property in Las Acacias is a unique opportunity to live in one of the most sought-after locations on the Costa del Sol. This apartment features 3 spacious bedrooms and 2 bathrooms, ideal for families or those seeking space and comfort. Enjoy direct access to the beautiful gardens and pool, perfect for cooling off and making the most of the region's sunny climate. The 7,000 m² of well-maintained gardens offer a natural and relaxing setting for walking or resting. The spacious, functional, and renovated kitchen includes an independent laundry room, designed for those who love cooking and daily tasks. Additionally, it has two private closed terraces: one accessible from the dining room, perfect for outdoor dining, and another additional terrace for relaxing or sharing special moments with friends and family. The property has a parking space, which is not included in the price, underground with direct access, ensuring comfort and security for your vehicle. It also features an electric gate with a code, enhancing the privacy and tranquillity of the residents. Located in one of the most attractive destinations on the Costa del Sol, this development offers proximity to beaches, golf courses, high-quality restaurants, and a wide range of services. Its tranquil and secure environment makes it the ideal place for both permanent residence and a second home. Would you like to know more or arrange a visit? Don't hesitate to contact us!



Características:

Características

Terraza Cubierta
Cerca de Transporte
Baño En-Suite
Armarios Empotrados
Bar
Restaurant
Servicio de Autobuses
Fibra óptica

Posición

Área Comercial
Cerca de Golf
Urbanización
Cerca del Mar
Cerca de Tiendas
Cerca de Ciudad
Cerca de los Bosques

Jardín

Jardín Comunitario

Servicios Públicos

Electricidad
Agua Potable

Orientación

Oeste

Estado

Buen estado de conservación

Seguridad

Recinto Cerrado
Alarma

Vistas

Vistas a Jardín

Piscina

Piscina Comunitaria

Aparcamiento

Parking Libre