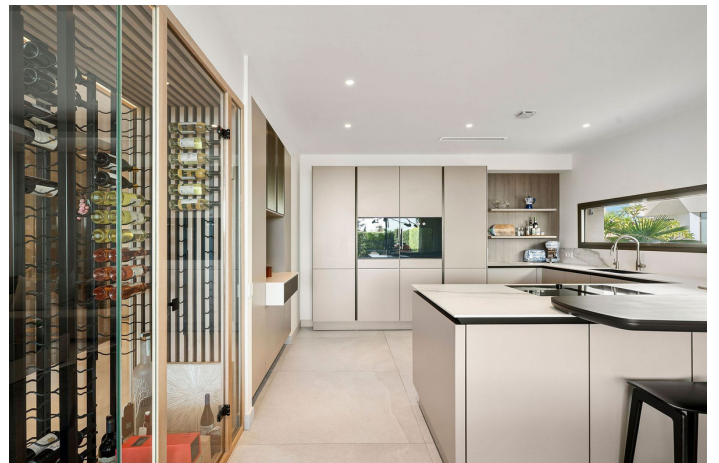




Semi-Detached House for sale in Nueva Andalucía, Marbella

4,650,000 €

Reference: R5168548 Bedrooms: 4 Bathrooms: 4 Plot Size: 90m² Build Size: 463m² Terrace: 194m²





Costa del Sol, Nueva Andalucía

Located in Nueva Andalucía, also known as the “Golf Valley” , you will find Celeste, in close proximity of international schools, restaurants, shops and the beautiful beaches of Costa del Sol.

Celeste is an exclusive residential urbanisation of 11 houses in a secure community in Nueva Andalucía.

The architecture is very modern with clean lines and top end building qualities.

As you enter the the urbanisation you are welcomed by water features and manicured gardens along with a spacious communal swimming pool.

The villa itself offers a south west facing outlook with stunning views to the Mediterranean with Africa and Gibraltar beyond.

Built over 3 floors entrance level has a nice open feel with a spacious open kitchen and living room leading out to a covered terrace and garden that gives a private spot for relaxation.

On this level you also find your third bedroom en suite.

As you go upstairs to the first floor, the stunning master bedroom suite awaits you with a double sided open fire place, bathtub with a view and a large dressing room as well as a large private terrace.

The first floor also have a second guest bedroom suite and the elevator which goes from the basement all the way up to the roof terrace on the 2nd floor.

The roof terrace enjoys 365 degree views of both the sea, mountains and the coastline of Costa del Sol. Not only is this a place to enjoy, relax and sun bathe but you also find you own private swimming pool.

When you think you have seen it all, take the elevator down to the lower level to find a spacious 3 car garage with direct access to the property, a further 4th bedroom with bathroom and the spacious family room where you find both a cinema/TV room, bar area and a gym area.

This property truly offers everything you will need for that perfect holiday or as a family home for permanent living.



Features:

Features

Covered Terrace
Lift
Near Transport
Ensuite Bathroom
Double Glazing
Fitted Wardrobes
Solarium
WiFi
Gym
Domotics
Basement
Access for people with reduced mobility

Views

Sea
Mountain
Panoramic

Pool

Communal
Heated
Private

Garden

Communal
Private
Landscaped

Utilities

Electricity

Orientation

South West

Setting

Close To Golf
Urbanisation
Close To Sea
Close To Shops
Close To Town
Close To Schools

Furniture

Fully Furnished

Security

Gated Complex
Alarm System
Electric Blinds
Entry Phone
Safe

Category

Golf
Luxury
Resale
Contemporary

Climate Control

Air Conditioning
Cold A/C
Hot A/C

Condition

Excellent

Kitchen

Fully Fitted

Parking

Underground
Private