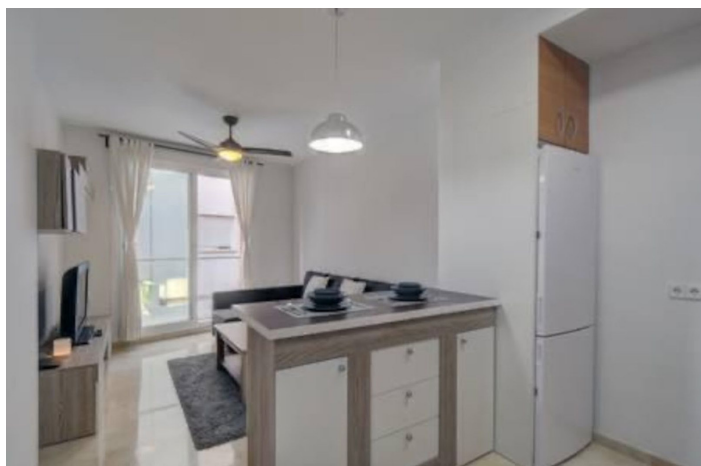
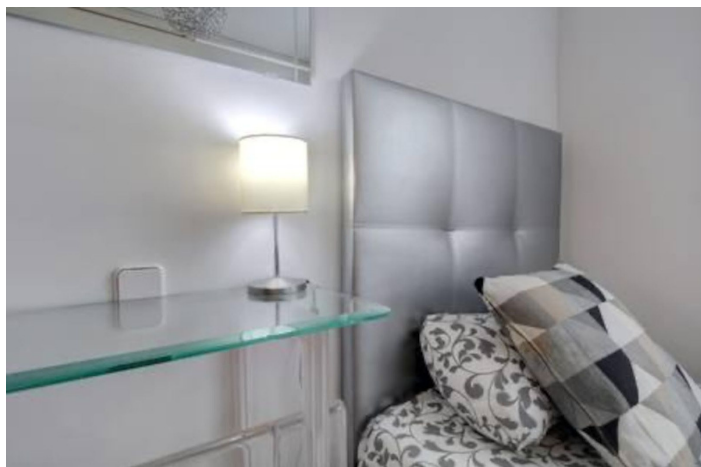




Ground Floor Apartment for sale in San Pedro de Alcántara, Marbella

290,000 €

Reference: R5221408 Bedrooms: 2 Bathrooms: 1 Build Size: 75m²





Costa del Sol, San Pedro de Alcántara

ACTIVE TOURIST LICENCE - Ideal for investment or holiday rental Bright and fully furnished apartment located in the heart of San Pedro Alcántara, just a short walk from the Boulevard and all local services. The layout is practical and full of natural light, and the property is ready to move into or to operate immediately as a tourist rental thanks to its active licence. Main Features- Built area: 75 m²- 2 bedrooms with fitted wardrobes- 1 full bathroom with bathtub and glass screen- Large independent storage room, perfect for storage or as an auxiliary space- Open-plan kitchen integrated into the living-dining area- Fully furnished and equipped- Building with lift and well-maintained common areas- Active tourist licence (documentation available) Location and Surroundings Situated on a quiet and well-connected street, right next to San Pedro Boulevard. Within a short walking distance you will find shops, restaurants, pharmacies, and public transport. The beach and promenade are nearby, and Puerto Banús is just 5 minutes away by car. Easy access to the A-7 motorway and Málaga Airport in approximately 45 minutes. Highlights of the Area- Established urban area with year-round tourist demand- Walking distance to all shops, services, and restaurants- Flat and convenient area, perfect for walking or cycling- Safe and attractive environment for both families and tourists This property is ready to generate income from day one - combining central location, complete furnishing, and active tourist licence. A highly competitive price for its type and location.



Features:

Orientation

South

Setting

Commercial Area

Close To Sea

Close To Shops

Close To Schools

Town

Kitchen

Fully Fitted

Climate Control

Air Conditioning

Condition

Excellent

Views

Street

Furniture

Fully Furnished

Optional